



Crabtree, Rohrbaugh & Associates

BERMUDIAN SPRINGS
SCHOOL DISTRICT

PRE-BID MEETING
NEW MIDDLE SCHOOL
January 22, 2020

1

PROJECT OVERVIEW

2

SCOPE REVIEW

3

BIDDING REQUIREMENTS

4

QUESTIONS

AGENDA

① PROJECT OVERVIEW



PROJECT OVERVIEW

- Owner: **Bermudian Springs School District**
- Superintendent: Dr. Shane Hotchkiss
 - Business Manager: Justin Peart
 - Director of Maintenance: Jason Ahlers
 - Principal: Shannon Myers
 - Clerk of the Works: Duane Hoffman

- Architect: **Crabtree Rohrbaugh & Associates**
- ❖ Principal: Anthony Colestock
 - ❖ Project Manager: Jessie Ellis
 - ❖ Project Coordinator: Rona Augustine
 - ❖ Construction Administrator: John Yarnall

- Engineers: **ELA Group - Civil**
- ❖ Principal: Cheryl Love
 - ❖ Senior Project Manager: Jason Best

- Barry Isett & Associates – Structural, MEP**
- ❖ Vice President: John Lewis
 - ❖ Structural: Bruce Andres
 - ❖ Electrical: Lucy Parette
 - ❖ Mechanical: Ryan Rupp
 - ❖ Plumbing & Fire Protection: Rob Bickleman

- Nyikos Associates – Food Service**
- ❖ Senior Associate: Jay Garcia



PROJECT OVERVIEW

PROJECT MILESTONE DATES:

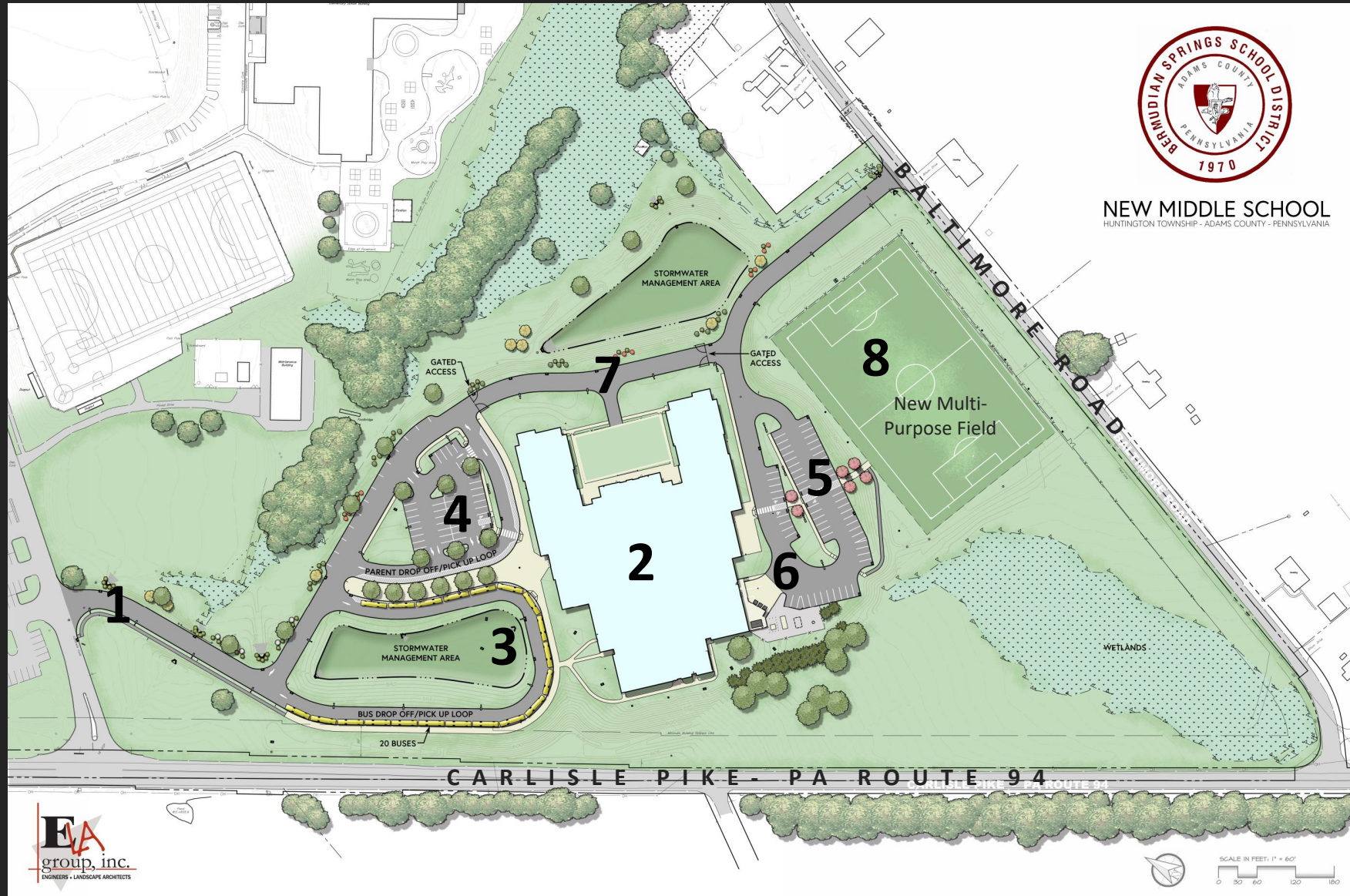
- 1. Bid Opening**
 - February 20, 2020
- 2. Intent to Award**
 - February 26, 2020
- 3. Notice to Proceed: Start of Construction**
 - March 16, 2020
- 4. Substantial Completion (600 calendar days for Construction)**
 - November 5, 2021

② SCOPE REVIEW

SCOPE REVIEW

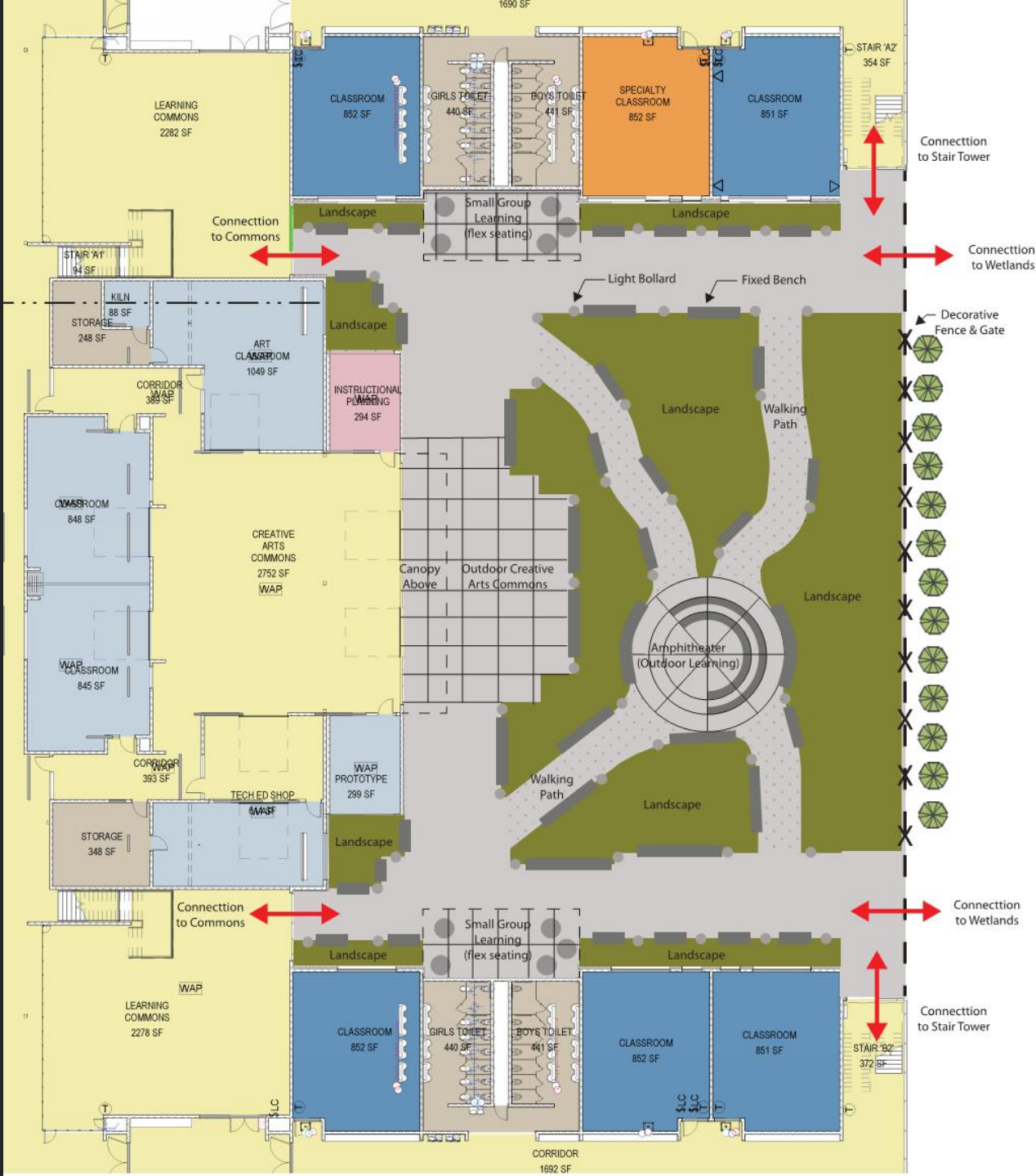
SITE PLAN:

1. New Access Drive
2. New Bermudian Springs Middle School
3. Separate Bus Drop-Off
4. Parent Drop-Off / Visitor Parking
5. Staff Parking
6. Service Drive / Loading Dock
7. Emergency Vehicle Access Drive
8. Athletic Multi-Purpose Field



SCOPE REVIEW

- Grades 5th – 8th
- New Construction – 140,000 SF
- Two-Story Academic Wings Separated by Lobby with Outdoor Courtyard
- 2B Non-Combustible Construction
- Load Bearing Masonry Construction
- Steel Frame Core in Lobby & Cafeteria
- Steel Joists & Steel Deck for Floor & Roof Construction
- Roof Construction (EPDM w/ 6" Polyiso Insulation)
- Exterior Walls (CMU back-up)
 - With Brick Veneer and Fiber Cement Panels
- Variable Air Volume Air Handling Units
- Fully Sprinkled Fire Protection System
- Geotechnical attachment in Specifications
- TAB & Commissioning provided by District



SCOPE REVIEW

8th Grade

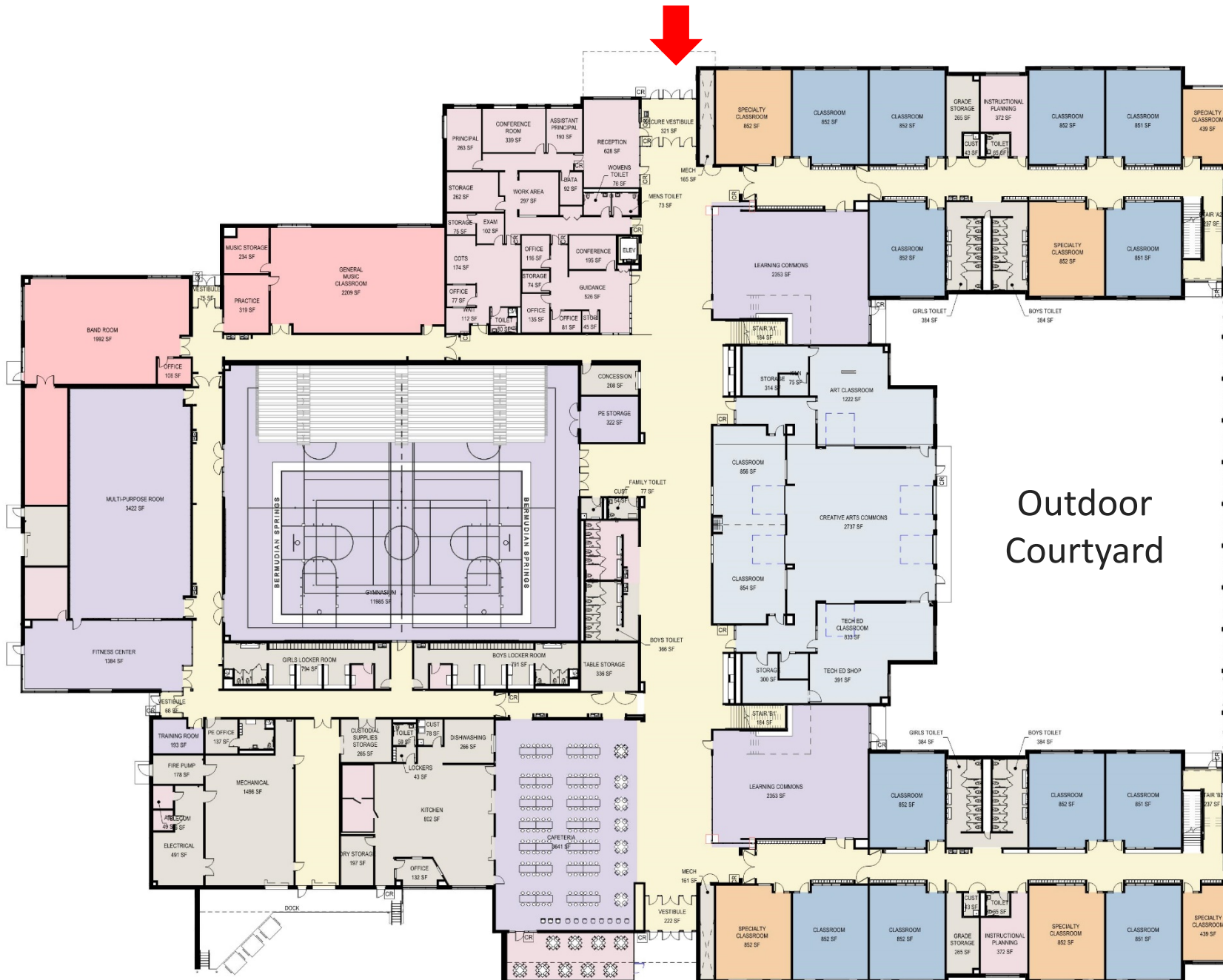
LEGEND

- ADMIN & NURSE
- CREATIVE ARTS
- GYM & PHYS. ED. DEPARTMENT
- CLASSROOM
- CAFÉ, CORRIDOR, STAIRS & VESTIBULE
- SPECIAL EDUCATION
- MUSIC
- SCIENCE
- KITCHEN, LOCKER, STORAGE, UTILITY & TOILET

Outdoor
Courtyard

5th Grade

First Floor Plan



SCOPE REVIEW

7th Grade

LEGEND

- ADMIN & NURSE
- CREATIVE ARTS
- GYM & PHYS. ED. DEPARTMENT CLASSROOM
- CAFÉ, CORRIDOR, STAIRS & VESTIBULE
- SPECIAL EDUCATION
- MUSIC
- SCIENCE
- KITCHEN, LOCKER, STORAGE, UTILITY & TOILET

6th Grade

Second Floor Plan



SCOPE REVIEW



MAIN ENTRANCE MATERIAL SELECTION
(Storefront & Curtain Wall Systems, Utility Brick & Fiber Cement Panel)

SCOPE REVIEW



EXTERIOR ENVELOPE*

* Exterior Renderings are for Orientation only, images generated during design prior to Final Construction Documents, CDs take precedence

SCOPE REVIEW

LOBBY*

* Interior Renderings are for Orientation only, images generated during design prior to Final Construction Documents, CD's take precedence.

LEARNING COMMONS*

* Interior Renderings are for Orientation only, images generated during design prior to Final Construction Documents, CD's take precedence.

SCOPE REVIEW



CREATIVE ARTS COMMONS*

* Interior Renderings are for Orientation only, images generated during design prior to Final Construction Documents, CD's take precedence.



BIDDING REQUIREMENTS

BIDDING REQUIREMENTS

DRAWINGS AND BID COMMUNICATION:



- Bidders may obtain bidding documents in hard copy and/or .pdf electronic format.
 - Printed copies - **\$650**
 - Electronic copies - **\$350**
- Submit requests to bidding@cra-architects.com. Mail checks to Crabtree, Rohrbaugh & Associates, 401 E. Winding Hill Rd., Mechanicsburg, PA 17055
- The following information shall be furnished by bidders when obtaining bidding documents:
 - Bidder's mailing address
 - Name of Bidder's representative
 - Bidder's telephone number
 - Bidder's facsimile number
 - Bidder's email address (email address used to submit the .pdf's)
 - Bidding documents requested, by Contract and Contract number
- Bidding documents may be viewed at BX noted in the advertisement. It is highly recommended to purchase drawings and don't rely on BX.
- Submit Bid RFI's to Anthony Colestock with CRA via email at acolestock@cra-architects.com
- To schedule a site visit contact Jason Ahlers with Bermudian Springs School District via email at jahlers@bermudian.org.

BIDDING REQUIREMENTS

KEY DATES:

- Addenda are anticipated to be issued weekly on Fridays (January 31, February 7, 14)
- Final Request for Information (RFI's) are due within 5 business days of Bid Opening (February 14)
- Last Addenda issued 2 days prior to Bid Opening (February 18)
- Bid Opening on February 20, 2:00 PM @ Bermudian Springs School District Administration Office



BIDDING REQUIREMENTS

ADVERTISEMENT FOR BID

Notice is hereby given that sealed bids for construction of the new Bermudian Springs Middle School, 7335 Carlisle Pike, York Springs PA 17372, **will be received at the Administrative Offices of the Bermudian Springs School District (“Owner”), c/o Justin Peart, Business Manager, 7335 Carlisle Pike, York Springs, PA, 17372 until 2:00 P.M., prevailing time, on February 20, 2020.** Bids shall be submitted in sealed envelopes bearing the name of the Bidder and shall be clearly marked “Bermudian Springs Middle School”. Bids will be publicly opened and read aloud immediately after the scheduled closing time for receipt of Bids. Bids received after the above-referenced date and time shall be returned to the Bidder unopened.

BIDDING REQUIREMENTS

BID FORMS

Bid Attachments:

Include with (2) two copies of Bid Form:

- (2) Copies Bid Bond
- (2) Copies Non-Collusion Affidavit
- (2) Copies Compliance with 111 of the Public School Code
- (2) Copies Non-Discrimination Affidavit
- (2) Copies Workers Compensation Affidavit
- (2) Copies Bidder's Qualifications, AIA Document A305

- Refer to Front End Specification for additional info and Bid Forms
- You will be bidding as a Prime Contractor to the BSSD.

Alternates:

All Primes

- Unclassified Excavation - ADD

General Construction

- Multi-Purpose Athletic Field (Seed) - ADD
- Multi-Purpose Athletic Field (Sod) - ADD
- Terrazzo Flooring in Lobby - ADD
- Porcelain Tile Flooring - ADD
- Terrazzo Flooring - ADD
- EPDM Roofing: 30 Year Warranty - ADD
- Courtyard Landscaping - DEDUCT

Electrical Construction

- Aluminum Feeders – DEDUCT

Unit Prices:

General Construction

1. Unsatisfactory Soil Removal and Replacement w/ Offsite Satisfactory Material
2. Unsatisfactory Soil Removal and Replacement w/ Onsite Satisfactory Material
3. Engineered Fill
4. Importation of Satisfactory Fill
5. Trench Rock Removal and Replacement w/ Offsite Satisfactory Soil Material
6. Trench Rock Removal and Replacement w/ Onsite Satisfactory Soil Material
7. Bulk Rock Removal and Replacement w/ Offsite Satisfactory Material
8. Bulk Rock Removal and Replacement w/ Onsite Satisfactory Material
9. Full Depth Light Duty Paving
10. Full Depth Heavy Duty Paving
11. Milling and Overlay Paving (1.5")
12. Milling and Overlay Paving (2")
13. Full Depth Pavement Removal/Restoration (Baltimore Rd)
14. Sodding

Mechanical Construction

1. Bulk Soil Excavation
2. Borrow Soil Replacement
3. Trench Rock Removal and Replacement w/ Satisfactory Material
4. Bulk Rock Removal and Replacement w/ Satisfactory Material
5. Shut-Off Valve
6. Hot Water Piping
7. Chilled Water Piping
8. Ductwork.
9. Supply Air Diffuser

BIDDING REQUIREMENTS

BID FORMS

Plumbing Construction

1. Bulk Soil Excavation
2. Borrow Soil Replacement
3. Trench Rock Removal and Replacement w/ Satisfactory Material
4. Bulk Rock Removal and Replacement w/ Satisfactory Material
5. Storm piping
6. Sanitary piping
7. Domestic water piping
8. Gas Piping
9. Ball Valve
10. Sprinkler Piping
11. Sprinkler Head

Electrical Construction

1. Bulk Soil Excavation
2. Borrow Soil Replacement
3. Trench Rock Removal and Replacement w/ Satisfactory Material
4. Bulk Rock Removal and Replacement w/ Satisfactory Material.
5. Receptacle
6. Data Outlet
7. Exit Sign
8. Fire Alarm Horn/Strobe
9. Fire Alarm Pull Station
10. 2' x 4' Recessed LED Lighting Fixture
11. Occupancy Sensor

BIDDING REQUIREMENTS

ADDITIONAL INFORMATION

BID DOCUMENTS

All bidders are required to familiarize themselves with the site, building, and all bidding documents including General Conditions and Requirements, Bid Package Descriptions, Temporary Facilities, etc. Submission of bid acknowledges that bidder has done so. All subcontractors and suppliers should familiarize themselves with the bid package descriptions found in the Specification Sections so they can direct their quotations to the correct Prime Contractor.

INSURANCE

Contractors will be required to submit and maintain insurance in accordance with the General Conditions. Paragraph 11 - Insurance: The School District and Architect shall be named as additional insureds.

BID SECURITY/BONDS

Bid security or bid bond in the amount of 10% of base bid shall be included with each proposal copy.

WAGE RATES

Project is subject to Pennsylvania Prevailing Wage Act. Certified payrolls will be required on a monthly basis with applications for payment. Current rates are included in the specifications.

TAXES

Bidders are directed to review the PA Tax Exempt Entities, Section 000860. Contractors will be responsible for sales tax, consumer, and use taxes as required by law. Contractors are directed to the PA. Sales & Use Tax Guide to determine which items are taxable/tax exempt. The Bermudian Springs School District reserves the right to pursue sales tax paid to the State in error.

BIDDING REQUIREMENTS

ADDITIONAL INFORMATION

PERFORMANCE/PAYMENT/BONDS

Successful contractors will be required to provide Performance and Payment Bonds. Performance, Payment and Bid Bonds must be submitted on forms provided in the documents. Surety companies must be legally authorized to do business in the State of Pennsylvania and must be listed in the latest U.S. Treasury Department Circular 570.

SUBSTITUTIONS

All substitutions must be submitted to the Architect no later than 30 days **after** the intent to award contracts is issued. Contractors are directed to use “Substitution Request Form” found in Section 012500. Unless materials have been accepted by Addendum, materials and equipment shall be furnished and installed as per the specifications.

MISCELLANEOUS ISSUES

NO SMOKING OR USE OF ILLEGAL DRUGS OR TOBACCO PRODUCTS ON SCHOOL PROPERTY.
THE USE OF PROFANITY IS PROHIBITED.

Act 34, Employee Background Check and Criminal History Reports will be required for all contractor employees and subcontractor employees working onsite. Contractors were instructed that once they are notified of intent to award that they should file with the Pennsylvania State Police for all criminal history reports for employees to be assigned to the project.

PROJECT CONSTRUCTION BUDGET

1. General Construction	\$15,000,000
2. Mechanical Construction	\$4,500,000
3. Plumbing & Fire Protection Construction	\$2,000,000
4. Electrical Construction	\$3,500,000

BERMUDIAN SPRINGS SCHOOL DISTRICT – MIDDLE SCHOOL
Pre-Bid Meeting 1-22-20

CRA Project No: 3240

NAME	COMPANY	ADDRESS	EMAIL	PHONE #
ANTHONY COLESTOCK	CRA	401 E. WINDING HILL ROAD, MECHANICSBURG, PA 17055	acolestock@ cra-architects.com	717.458.0272
JESSIE ELLIS	CRA	"	jellis@ cra-architects.com	717.458.0272
Shane HutchKiss	BSSD			
JOHN LEWIS	BIA			
JASON AHLER	BSSD		jahlers@bermudian.org	
Diane Hoffman	BSSD			
Cody Hair	eci Construction	124 W. Church St. Dillsburg PA	estimating@eci.construction.us	717-638-3000
MIKE HANNAN	MATCHLINE Mech.	901 DOWN AVE Ephrata Pa	mhannan@matchline mechanical.com	717-490-9330
CHAD ZANDER	NORTH BAY MECHANICAL	136 EAST LOCUST STREET OXFORD, PA 19363	tom.t@northbaymech.com	717-803-0046

BERMUDIAN SPRINGS SCHOOL DISTRICT – MIDDLE SCHOOL
Pre-Bid Meeting 1-22-20

CRA Project No: 3240

NAME	COMPANY	ADDRESS	EMAIL	PHONE #
JUSTIN PEART	BSSD	7335 Carlisle Pike York Springs, PA 17372	jpeart@bermudian.org	717-528-4113
DUSTYN SPEELMAN	LOTAR Inc	1 OLD Mill Rd. DILLSBURG, PA	DUSTYN.SPEELMAN@LOTAR.COM	717-432-9728
DAN BEIGH	LOTAR Inc	1 OLD Mill Rd. DILLSBURG, PA	DAN.BEIGH@LOTAR.COM	717-432-9728
PAUL BRIGGS	SWAN ELECTRIC	490 HIGH STREET HANOVER, PA 17331	PAUL@SWANELECTRIC.COM	717-637-3821 x308
CHERYL LOVE	ELA	743 S. BROAD STREET LITIZ PA 17543	CLLOVE@ELAGROUP.COM	717-626-7271
JASON BEST	ELA	"	JCBEST@ELAGROUP.COM	"
John Yarnall	CRA			
JOHN RINALDO	Dynatech Controls		jrinaldo@DynatechControls.com	717-462-9801

QUESTIONS?



Crabtree, Rohrbaugh & Associates
www.cra-architects.com